


100% of Actual Size  
Pad Print



100% of Actual Size  
Laser Engraving



 Stainless Steel Engraves to a  
Natural Etch

Please be aware that artwork will adhere to the shape of the product.  
Therefore, linear shapes that utilise the full print area may appear skewed  
from the side perspective due to the tapered nature of the product.

100% of Actual Size  
Pad Print



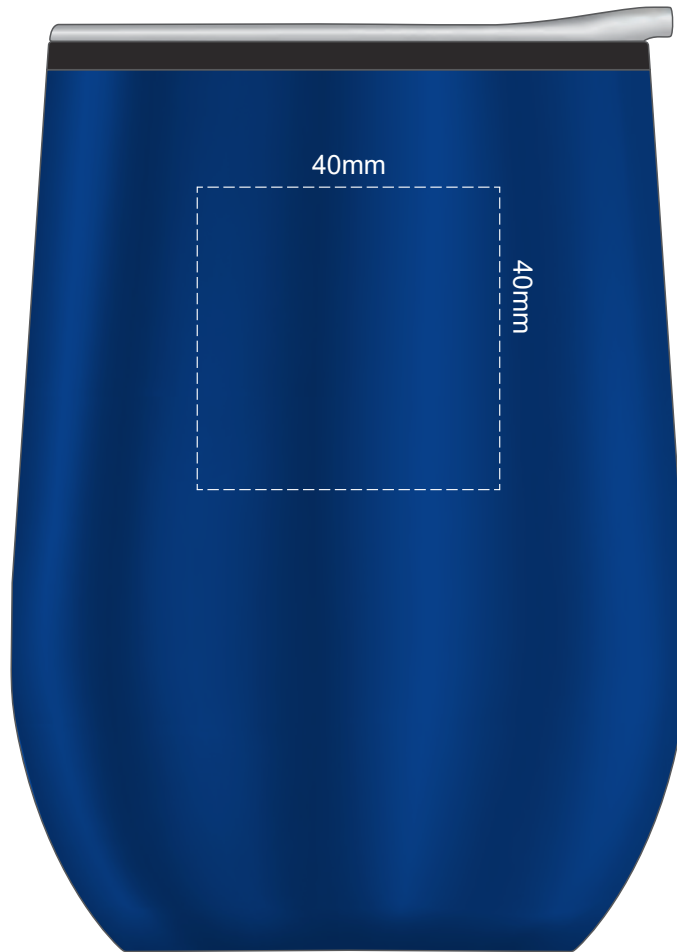
100% of Actual Size  
Laser Engraving



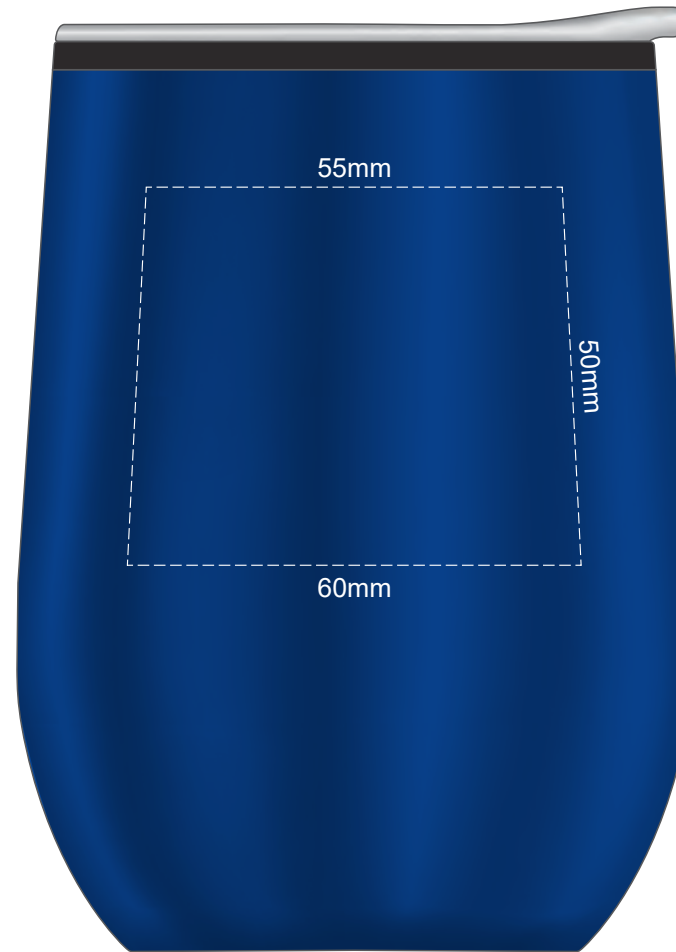
Engraves to a  
Shiny Steel Finish

Please be aware that artwork will adhere to the shape of the product.  
Therefore, linear shapes that utilise the full print area may appear skewed  
from the side perspective due to the tapered nature of the product.

100% of Actual Size  
Pad Print



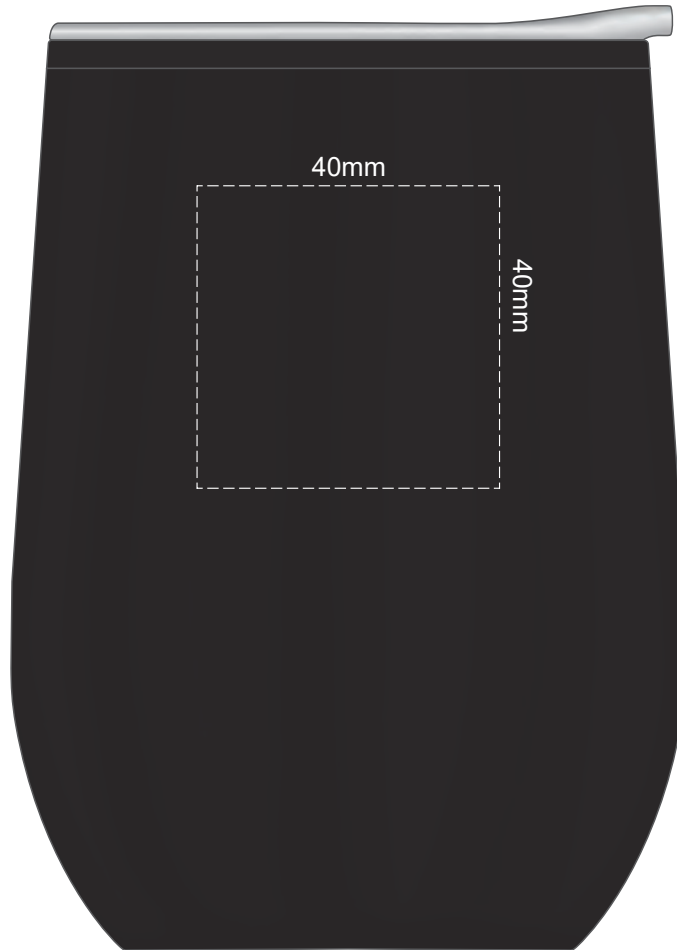
100% of Actual Size  
Laser Engraving



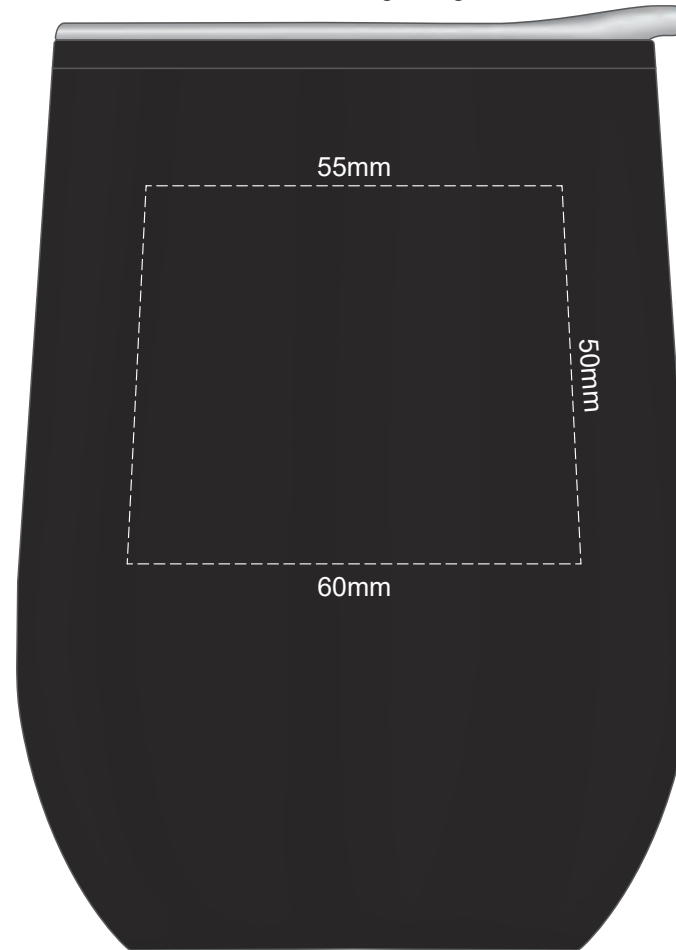
Engraves to a  
Shiny Steel Finish

Please be aware that artwork will adhere to the shape of the product.  
Therefore, linear shapes that utilise the full print area may appear skewed  
from the side perspective due to the tapered nature of the product.

100% of Actual Size  
Pad Print



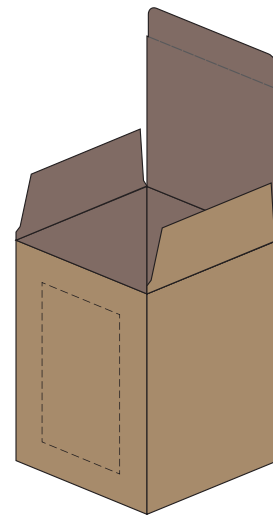
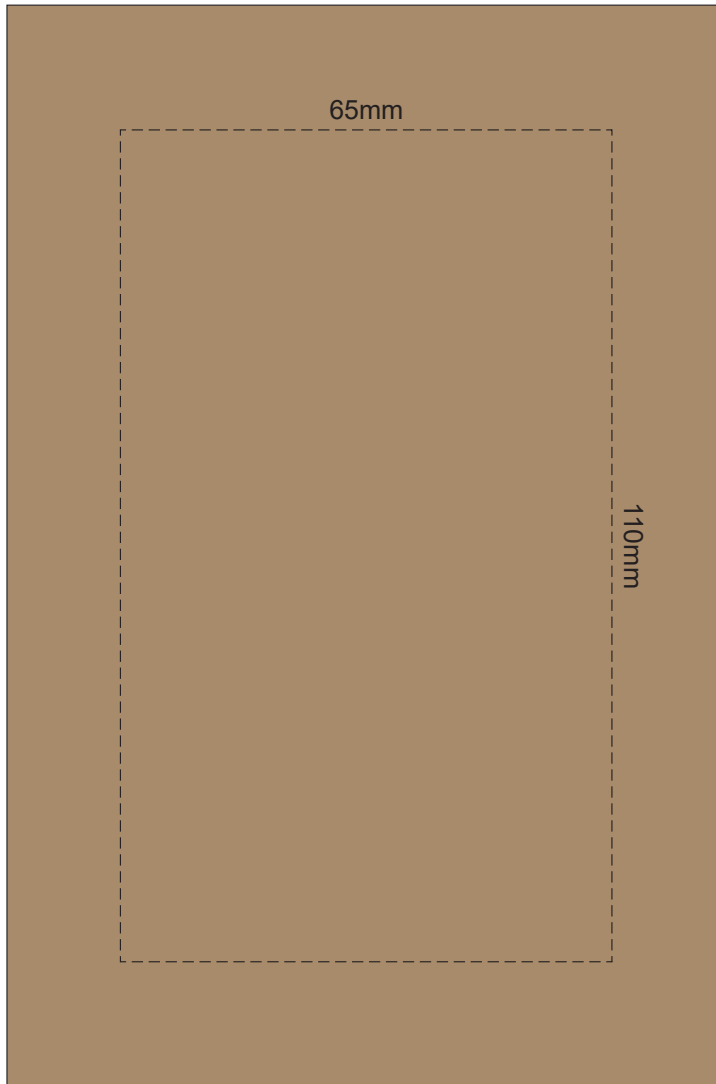
100% of Actual Size  
Laser Engraving



Engraves to a  
Shiny Steel Finish

Please be aware that artwork will adhere to the shape of the product.  
Therefore, linear shapes that utilise the full print area may appear skewed  
from the side perspective due to the tapered nature of the product.

100% of Actual Size  
Digital Packaing Print  
FRONT



Artwork will be printed directly onto the product via CMYK printing (no white),  
colours will not be vibrant due to white ink not being available for this process.

